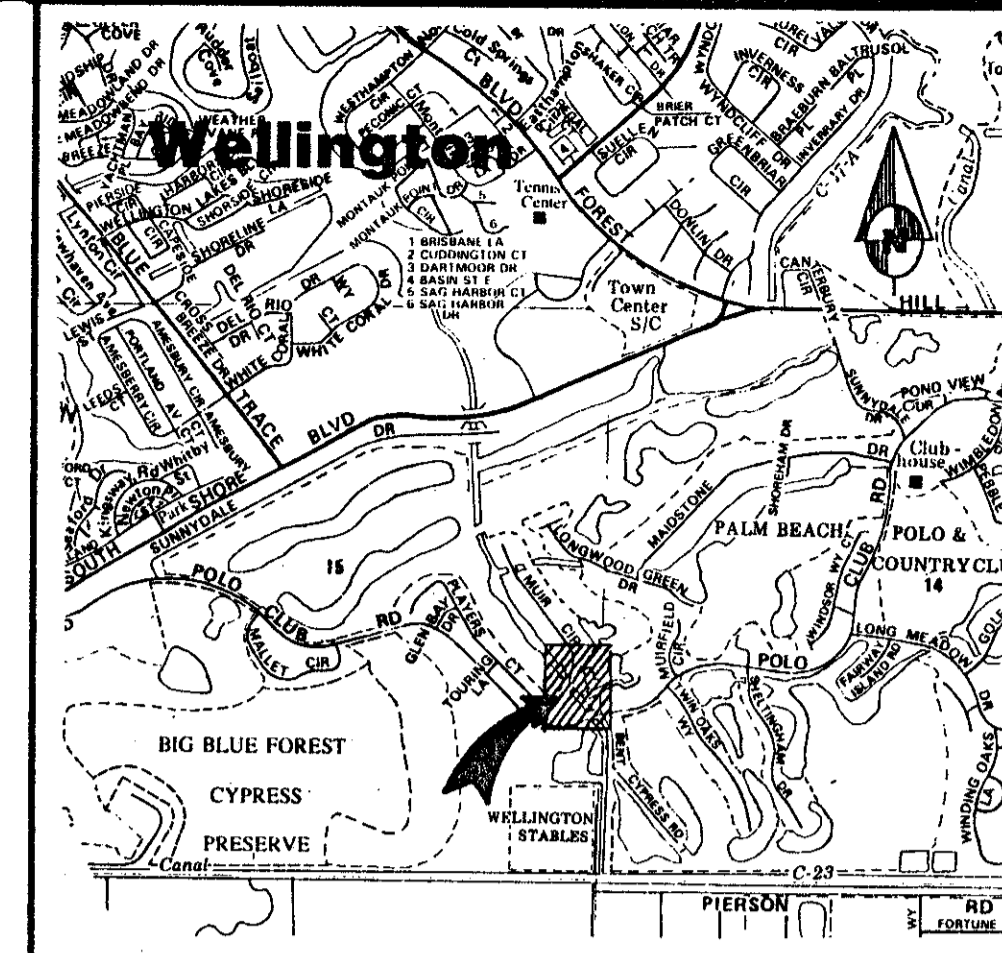


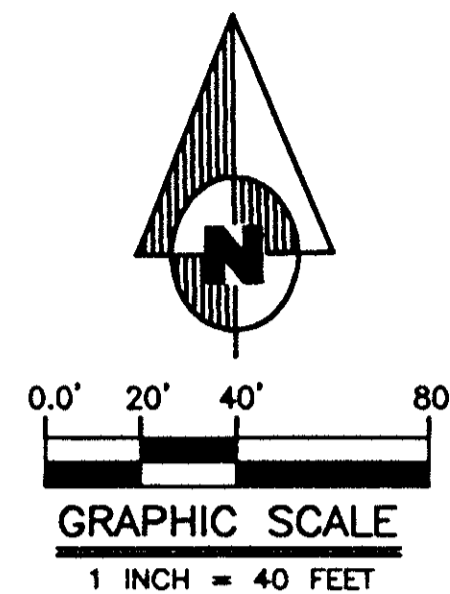
# PARCELS 62C & 66A OF PALM BEACH POLO AND COUNTRY CLUB- WELLINGTON P.U.D.

IN SECTION 15, TOWNSHIP 44 SOUTH, RANGE 41 EAST  
VILLAGE OF WELLINGTON, PALM BEACH COUNTY, FLORIDA  
JANUARY 1998  
SHEET 2 OF 2 SHEETS



178

PET. 86-32  
5/2/4/G



**NOTES:**  
**COORDINATES, BEARINGS, & DISTANCES**

COORDINATES SHOWN ARE GRID  
DATUM = NAD 83 1990 ADJUSTMENT  
ZONE = FLORIDA EAST  
LINEAR UNIT = US SURVEY FEET  
COORDINATE SYSTEM = 1983 STATE PLANE  
TRANSVERSE MERCATOR PROJECTION

ALL DISTANCES ARE GROUND

SCALE FACTOR = 1.00001247

GROUND DISTANCE x SCALE FACTOR = GRID DISTANCE

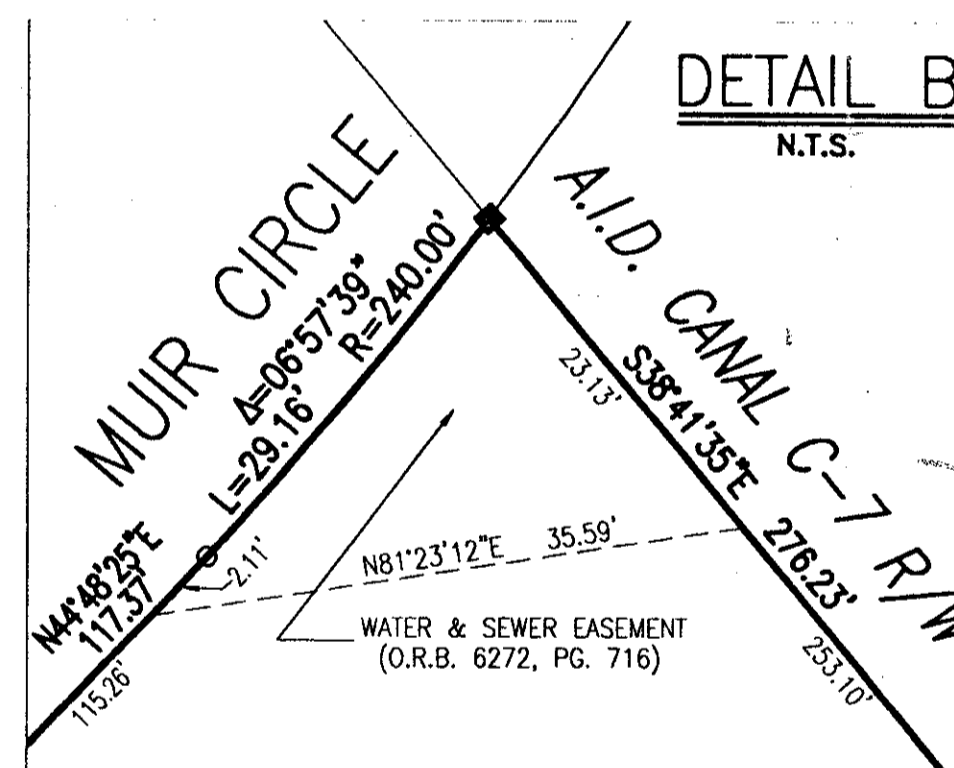
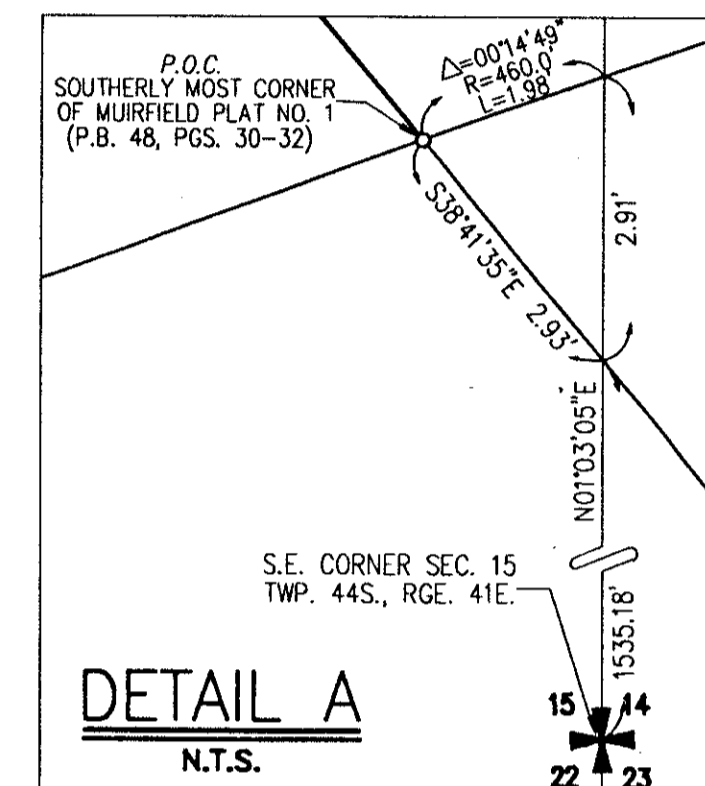
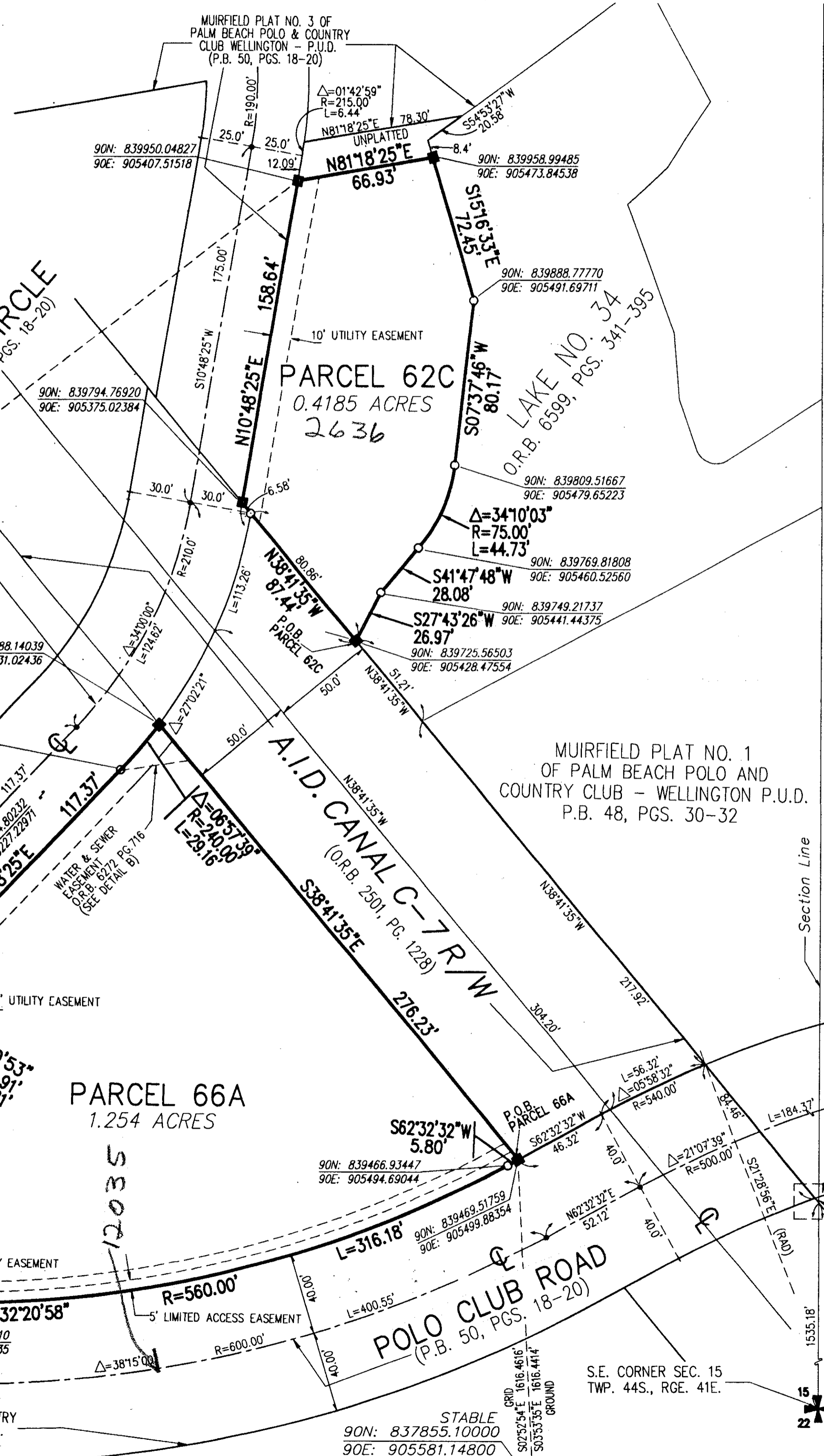
EAST LINE SEC. 15 - PLAT BEARING N.01°03'34"E  
- GRID BEARING N.02°04'16"E

BEARING ROTATION PLAT TO GRID  
01°00'41" CLOCKWISE

SEABISCUIT  
90N: 840924.05700  
90E: 901474.53600

DEER RIDGE  
90N: 837950.14400  
90E: 902813.28400

SEE SURVEYORS AFFIDAVIT FILED ON JANUARY 23, 1998  
IN O.R.B. 10194, PAGES 1922 & 1923 PALM BEACH COUNTY, FL  
PUBLIC RECORDS.  
EAGLES LANDING  
P.B. 63, PGS. 59-62



**LOCATION MAP**

NOT TO SCALE

**NOTES:**

- ALL BEARINGS SHOWN HEREON ARE RELATIVE TO AN ASSUMED BEARING OF N.01°03'34" E (PLAT) & N.02°04'16" E (GRID) ALONG THE EAST LINE OF SECTION 15, TOWNSHIP 44 SOUTH, RANGE 41 EAST, PALM BEACH COUNTY, FLORIDA, AND ALL OTHER BEARINGS ARE RELATIVE THERETO.
- DENOTES SET PERMANENT REFERENCE MONUMENT (P.R.M.) P.L.S. #2297 UNLESS OTHERWISE NOTED
- NOTICE THERE MAY BE ADDITIONAL RESTRICTIONS THAT ARE NOT REFLECTED ON THIS PLAT THAT MAY BE FOUND IN THE PUBLIC RECORDS OF THIS COUNTY.
- NO BUILDING OR ANY TYPE OF CONSTRUCTION OR TREES OR SHRUBS SHALL BE PLACED ON ANY EASEMENT WITHOUT PRIOR WRITTEN CONSENT OF ALL EASEMENT BENEFICIARIES AND ALL APPLICABLE VILLAGE AND COUNTY APPROVALS OR PERMITS AS REQUIRED FOR SUCH ENCROACHMENTS.
- IN INSTANCES WHERE DRAINAGE AND UTILITY EASEMENTS INTERSECT, THOSE AREAS OF INTERSECTION ARE DRAINAGE AND UTILITY EASEMENTS. CONSTRUCTION, OPERATION AND MAINTENANCE OF UTILITIES WITHIN THESE AREAS OF INTERSECTION SHALL NOT INTERFERE WITH THE CONSTRUCTION, OPERATION, AND MAINTENANCE OF DRAINAGE FACILITIES.
- BUILDING SETBACK LINES SHALL BE AS REQUIRED BY CURRENT VILLAGE OF WELLINGTON ZONING REGULATIONS AND/OR ANY RESTRICTIVE COVENANTS PERTAINING TO THAT PORTION OF THE DEVELOPMENT SHOWN HEREON.

**LEGEND:**

- P.O.C. = POINT OF COMMENCEMENT
- P.O.B. = POINT OF BEGINNING
- P.B. = PLAT BOOK
- PG.(S) = PAGE(S)
- P.R.M. = PERMANENT REFERENCE MONUMENT
- O.R.B. = OFFICIAL RECORD BOOK
- D.B. = DEED BOOK
- ☉ = CENTERLINE
- = DENOTES SET P.R.M. P.L.S. # 2297 UNLESS OTHERWISE NOTED
- = DENOTES FOUND P.R.M. AS NOTED
- SEC. = SECTION
- TWP. = TOWNSHIP
- RGE. = RANGE
- ▲ = PALM BEACH COUNTY SURVEY DEPARTMENT BRASS DISK IN CONCRETE
- = SET IRON ROD WITH L.B. #1376 CAP.
- = PERMANENT CONTROL POINT (P.C.P.) #2297
- Δ = CENTRAL ANGLE (DELTA)
- R = RADIUS
- L = LENGTH OF ARC
- RAW = RIGHT OF WAY
- A.I.D. = ACME IMPROVEMENT DISTRICT
- RAD = RADIAL
- LB. = LICENSED BUSINESS

VILLAGE OF WELLINGTON

14000 GREENBRIAR BLVD.  
WELLINGTON, FLORIDA 33414  
(561) 791-4000

THIS INSTRUMENT WAS PREPARED BY  
PAUL J. FOTORNY, P.L.S. IN THE OFFICES  
OF DAILEY-FOTORNY, INC., 5050 10TH  
AVENUE NORTH, GREENACRES, FLORIDA,  
33463

82/178

**Dailey-Fotorny, inc.**  
land surveyors - planners  
5050 10th Avenue North Suite A - Lake Worth FL 33463-2062  
Phone: 561-965-8787 Fax: 561-965-8963

0332-129

1A2  
1002  
SUBDIVISION = Palm Beach Polo & Country Club  
BOOK = 83  
PAGE = 178  
FLOOD MAP = 1000  
ZONING = AR  
QUAD = 62  
ZIP CODE = 33414  
PUD NAME = Palm Beach Polo & Country Club